

Adaptable Boxes

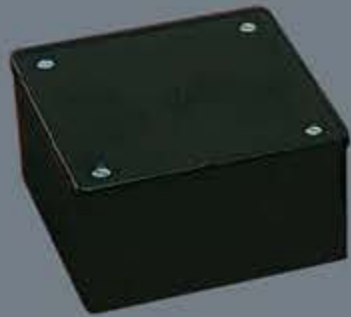
BLK OR WHI



MAB1



MAB2



MAB3

BLK OR WHI



MAB4



MAB5



MAB6

Heat-Resistant Boxes

BLK ONLY



2ECR25

Earth Electrode Box

BLK ONLY



EEB1

Circular Lids Gaskets and Screws

BLK OR WHI



EL1



EL2



EL3

MAB1
EXTERNAL SIZE
75 x 75 x 41mm

5

MAB2
EXTERNAL SIZE
75 x 75 x 53mm

5

MAB3
INTERNAL SIZE
100 x 100 x 50mm

5

MAB4
INTERNAL SIZE
100 x 100 x 75mm

5

MAB5
INTERNAL SIZE
150 x 75 x 50mm

5

MAB6
INTERNAL SIZE
150 x 100 x 50mm

5

MAB7
INTERNAL SIZE
150 x 150 x 75mm

5

MAB8
INTERNAL SIZE
225 x 225 x 75mm

5

5 **2ECR25BLK**
20mm FLAT BASED WITH
20mm CUT-OUTS FOR
CONDUIT ENTRY

5**5****2****2****10**

EEB1BLK
75 x 75 x 70mm

5

EL1
LIDS 66mm DIA

100

EL2
OVERLAPPING LIDS
85mm DIA

50

EL3
RUBBER GASKETS
66mm DIA

50

M4X10SS
SCREWS FOR
CIRCULAR BOXES

100

Available in Black or White.
When ordering use colour suffix
BLK or WHI.
MATERIAL:
PVCu
Note: Boxes are not IP Rated.

Available in Black only.
MATERIAL:
Noryl/PVCu
LID FIXING CENTRES:
50.8mm
PILLAR THREAD SIZE:
M4 (metal inserts)
LOAD SUSPENSION:
10kg. @ 100°C max.
All Heat Resistant Boxes include
keying facility.

Available in Black only.
MATERIAL:
PVCu
The Egatube Earth Electrode Box
is to protect the connection to an
earth electrode.

EL1/EL2
Available in Black or White.
When ordering use colour suffix
BLK or WHI.
EL3 is available in Black only.
MATERIAL:
EL1 and EL2: PVCu
EL3: Rubber
LID FIXING CENTRES:
50.8mm